

KONICA MINOLTA

AccurioLabel  
230

# ALL-IN-ONE DIGITAL LABEL PRINTING

RETHINK YOUR  
CAPABILITIES



Giving Shape to Ideas

QUALITY

FLEXIBILITY

THE PERFECT FIT

PRODUCTIVITY

LAMINATOR

SLITTER



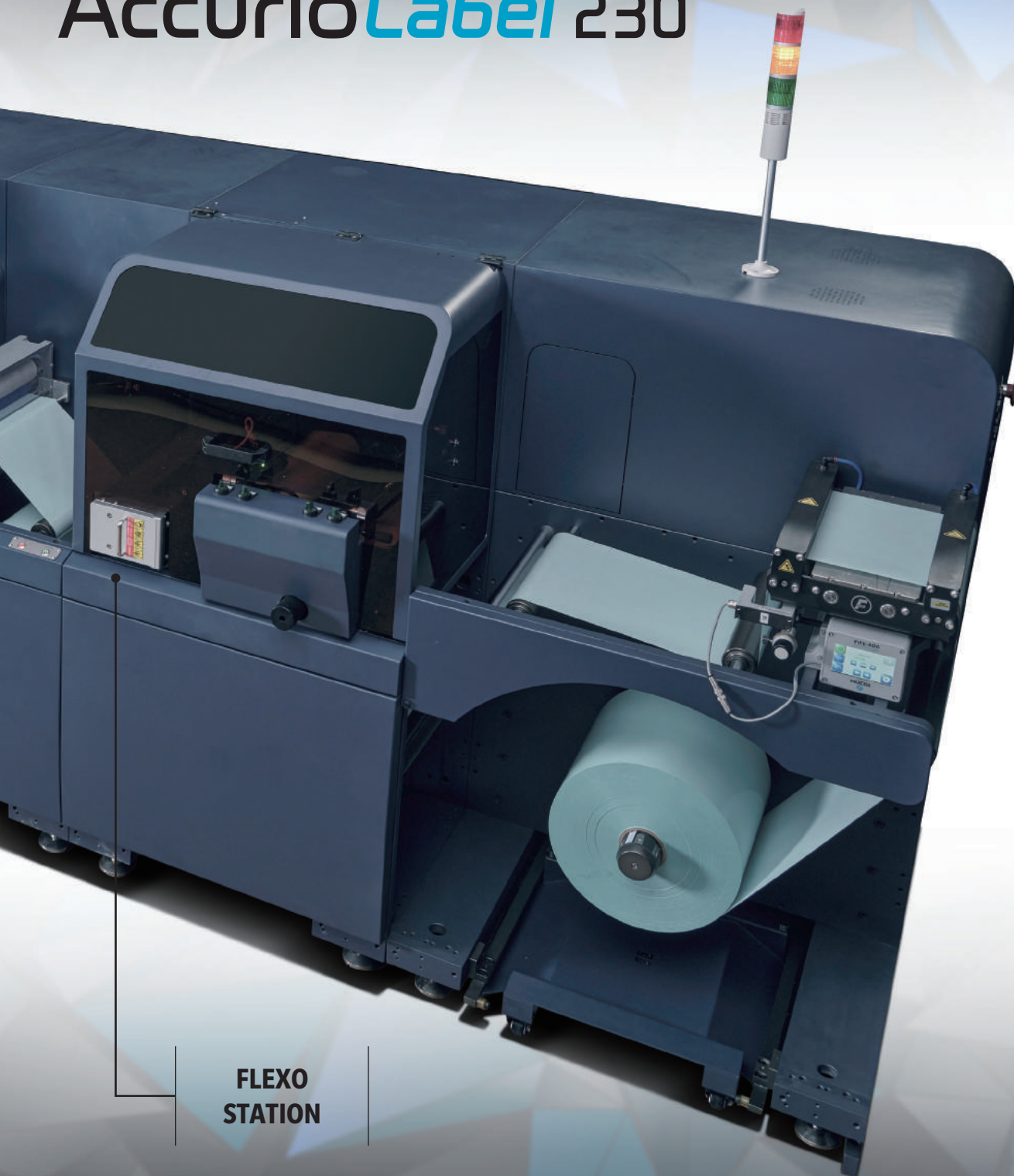
## EXCEPTIONAL PERFORMANCE

- High productivity with print speeds of up to 23.4 m/min
- Excellent image quality to meet the diverse needs of the market
- Strong media compatibility, no pre-processing required
- Outstanding operability
- Sophisticated colour management features
- Superb colour stability
- Supports secondary overprinting on pre-printed media
- Add optional modules to your system (online or offline) for laminating, varnishing, cold foiling, die cutting and slitting:

**Laminator**  
**Slitter**  
**Flexo Station**

Digital label printing with enhanced productivity, job flexibility, easy operation and outstanding image quality, all at an affordable running cost. The AccurioLabel 320 is the perfect fit for expanding print businesses seeking to add digital production options alongside analogue presses.

# AccurioLabel 230



**FLEVO  
STATION**

The Flexo Station design is subject to change before shipping without prior notice.

# DIGITAL LABEL PRINTING

## Gain the Digital Advantage

Print runs are getting shorter across the market compared to the long-run, high-volume orders that were once the norm. Being able to offer competitively priced, low-volume print runs and cope with short turnaround times is essential to meeting market demands. With digital printing, you can fulfil low-volume orders

efficiently and maintain profit margins for your business. Simplify workflow and add value to your services with benefits such as variable data printing (VDP), or numbering, to stand out in a market where needs are increasingly diverse.

### Disadvantages of Analogue

Preparation, including colour adjustment and ink cleaning, etc. is required

- 1 ▶ Print plates must be changed between each job
- 2 ▶ Significant waste from trial and test runs (especially in roll-feed systems)
- 3 ▶ Expert operator required

### Digital Advantages

Print data is processed directly from a PC

- 1 ▶ Preparation is as simple as paper replacement and colour adjustment as required
- 2 ▶ Stable quality from the first sheet to the last, reducing waste
- 3 ▶ Follow simple output and maintenance instructions as displayed on the screen

**The AccurioLabel 230 digital label printer offers outstanding productivity, image quality and operability as well as economic advantages which make it ideal for those aiming to expand into the label market alongside existing analogue services.**

### POTENTIAL APPLICATIONS

Small-lot label printing

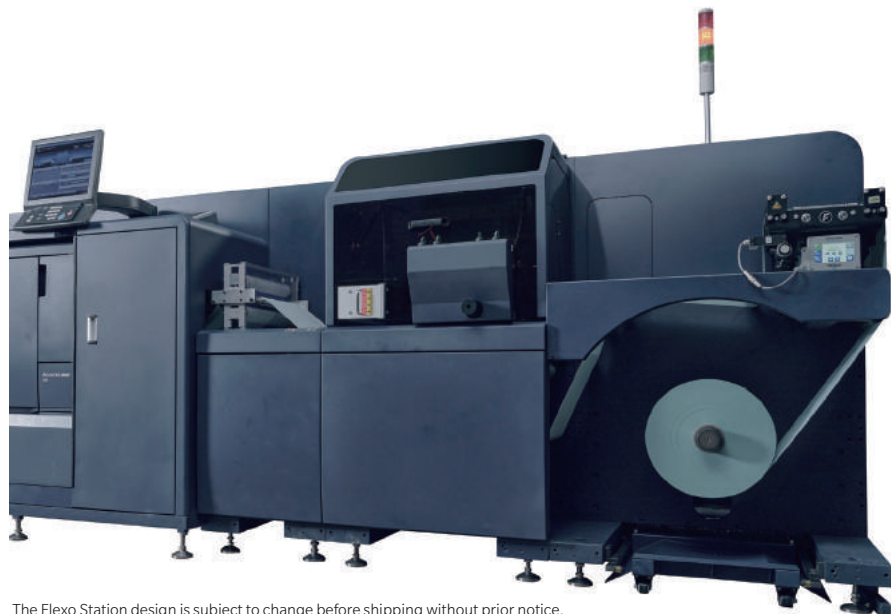
Labelling for local products

Label design sample printing

Labels for events or special occasions

Labels requiring variable data printing (VDP)

Personalised labels



The Flexo Station design is subject to change before shipping without prior notice.

## A label printer well equipped to meet a diverse range of needs

### Thin line expression

Thin lines in complex images are faithfully reproduced using the Edge Enhancement function.



### Solid colour density

Solid black areas with high colour density are smoothed out.

### Photographic image quality

Images are reproduced in stable, high quality through multi-level data processing and a wide colour gamut.

### Gradations

Achieves a natural finish using rich gradations of colour.

### Variable data printing (VDP)

Print changes page-to-page, such as batch numbers or original labels.



### Barcode printing

Even small barcodes can be printed clearly without blurring. VDP barcodes can also be printed.

### Small text

Even small-point characters are reproduced clearly, ensuring readability.

### Reproduce flawless skin tones

Visible roughness is suppressed to reproduce richly textured human skin tones.



# ENHANCED PRODUCTIVITY & FLEXIBILITY

Digital print businesses are demanding shorter turnaround times and expanded applications. The AccurioLabel 230 has the solution with exceptional productivity and broad capabilities including the ability to print onto pre-printed transparent or coloured media.

## ENHANCED PRODUCTIVITY

### Fast print speed of up to 23.4 m/min.

The highest possible speed to print onto most adhesive papers and films is 23.4 m/min. Compared to previous models, the AccurioLabel 230 has improved speed, a shorter delivery cycle and broader applications to expand business scope.

## IMPROVED EFFICIENCY

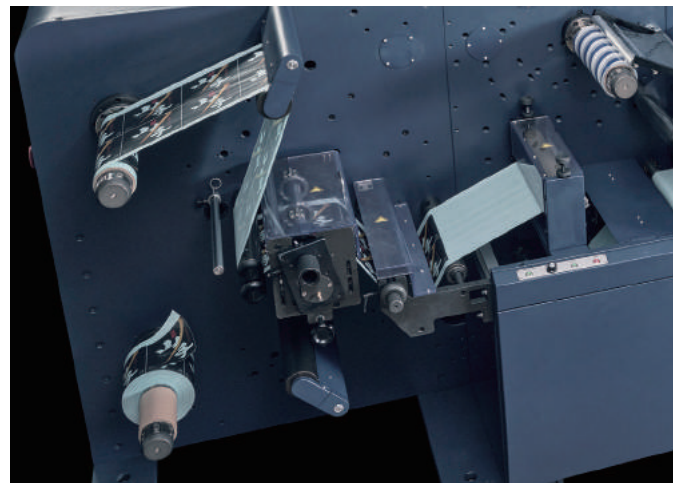
### Short warm-up time

Warm-up time between jobs is minimised by keeping the fixing unit operational during the transition between jobs. This not only improves overall productivity by reducing changeover time, but also reduces paper waste.

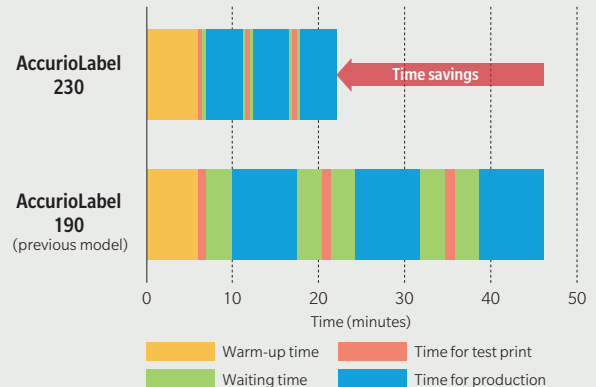
## EXTENDED RUN LENGTH

### Continuous printing up to 1,000 meters

Print large, continuous production jobs without the losses incurred by turnover times and switching paper. When printing long jobs where toner coverage is low, the AccurioLabel 230 will automatically add colour belts to both sides of the paper to supply the necessary amount of toner and keep the developer fresh. Colour belts are not necessary when toner coverage is 3.5% or higher.



Time comparison for three 100-metre print jobs



Thanks to improved productivity and shorter warm-up time, the total printing time of the AccurioLabel 230 has been reduced by approximately half compared to the previous model, the AccurioLabel 190. This shortens lead time and allows businesses to process more orders.

## EASY TO USE

### Operator panel supports mouse operation

The large, 15-inch display is easy to view and operate. The angle of the panel can be freely adjusted to suit individual users and the intuitive GUI and guidance messages ensure ease of operation during setup. A USB mouse can be connected to further improve operability.

WIDER RANGE OF APPLICATIONS

**Strong media compatibility without pre-treatment**

HD<sup>F</sup> digital toner and Konica Minolta's low-temperature fixation technology make the AccurioLabel 230 compatible with a wide range of media above and beyond ordinary paper or matte options. Print onto all the gloss, adhesive and film medias that are essential for label production. Users can select the ideal medium for their designs and print labels without the need for pre-processing.

**Label substrates**

**Glossy or matte fine art paper**

Ideal for locally produced food or beverages, event supplies, souvenirs etc.

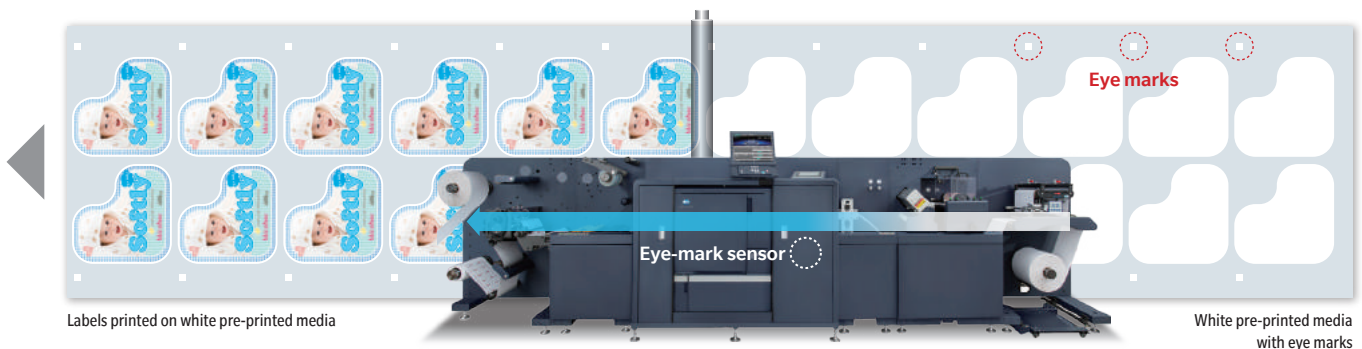
**YUPO®, PET, PP, etc.**

Perfect for cosmetics, pharmaceuticals, industrial products, beverages etc.

PRINT ON TRANSPARENT OR COLOURED MEDIA

**Overprinting capability with accurate alignment**

The system can be equipped with an optional overprint kit to enhance compatibility. The module's new eye mark sensor enables precise alignment, which in turn allows the device to carry out digital four-colour printing on pre-coated media.



Labels printed on white pre-printed media

White pre-printed media with eye marks

LABELS UNLIMITED BY SAFE USE

**Food Grade Toner**

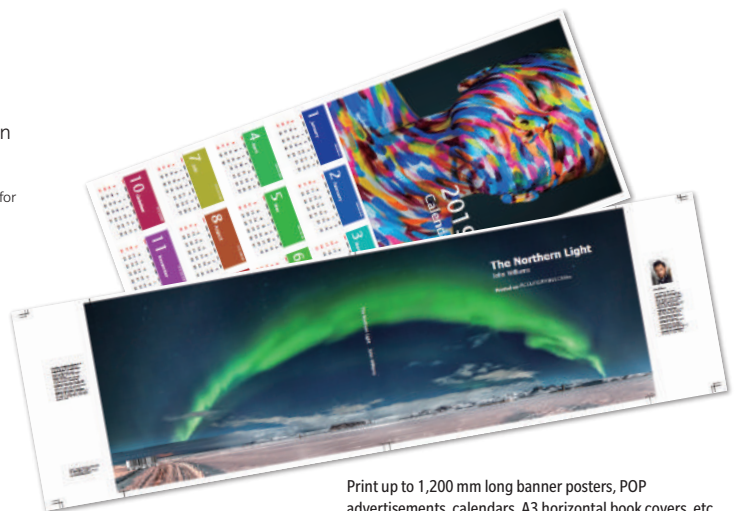
The toner used by the AccurioLabel 230 meets FDA standards for safety in applications with indirect contact to food, such as packaging labels.

\* FDA standards are strict safety standards established by the FDA (US Food and Drug Administration) for potential products that come into contact with food, medicines, and cosmetics.

OTHER APPLICATIONS

**Banner printing capability**

From store decorations to floor POP advertisements, the AccurioLabel 230 can print an extensive range of large formats including long posters and signboards. Combine medias to create promotional materials combining labels with other items to boost business expansion.



Print up to 1,200 mm long banner posters, POP advertisements, calendars, A3 horizontal book covers, etc.

# EXCELLENT & CONSISTENT QUALITY

As experts in realising outstanding quality for the high-end print market, Konica Minolta has developed a range of unique technologies. Colour fluctuation is minimised, ensuring stable and beautiful finishes from start to finish. High-quality images add value to printed materials, and to the services you can offer.

## HIGH-RESOLUTION, MULTI-LEVEL DATA PROCESSING

### High resolution

**3,600 (equivalent) x 1,200 dpi x 8 bits**

Combined with the reproductive capability of HD<sup>F</sup> digital toner, small characters and fine lines can be printed clearly, and colour images can be beautifully output with rich colour gradations.

## CUTTING-EDGE IMAGE PROCESSING TECHNOLOGY

### S.E.A.D. V

Konica Minolta's cutting-edge image processing technology S.E.A.D. V is based on a new generation of image processing ASICs (dedicated chips) and uses a fully automated colour adjustment function to achieve optimum print quality.



## HIGH QUALITY, LOW ENERGY CONSUMPTION

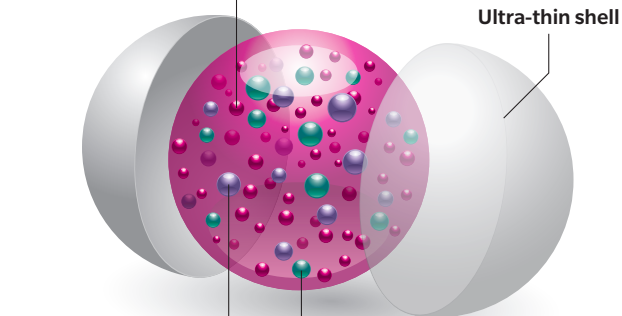
### Simitri HD<sup>E</sup> polymerised toner

A 3D hybrid structure composed of functional polymers that are highly compatible with various types of media and enables reproduction of ideal natural textures. What's more, the toner requires only a small amount of heat to fuse, significantly reducing power consumption.

#### ■ 3-dimensional hybrid particles

##### ● Colourant

More accurate red, less colour fading, enhanced halftone and more natural skin tones.



##### ● Functional polymer

Higher image quality, reduced energy use and faster processing

##### ● Sharp melt wax

High image quality and reduced energy use



#### ■ Blue Wool Test: The results according to ISO 105 B2 (lightfastness test)

Cyan <b>8<sup>+</sup></b>	Magenta <b>6-7</b>	Yellow <b>8</b>	Black <b>8<sup>+</sup></b>
------------------------------	-----------------------	--------------------	-------------------------------

Remarks: The evaluation criteria classify colourants into 8 levels (1-8), and the higher the value, the higher the lightfastness.

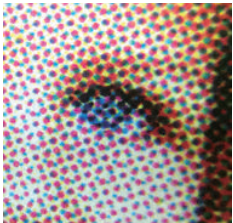
8<sup>+</sup> test results indicate that the lightfastness of Cyan and Black toner is ranked as 8 or higher



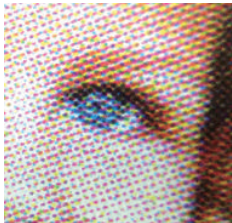
CHOOSE A SCREENING METHOD BASED ON THE PURPOSE OF USE

High-quality screening

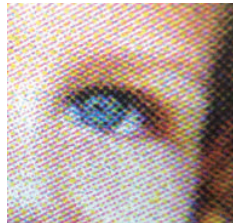
The AccurioLabel 230 comes with twelve halftone screens, including six dot screens, three line screens, and three stochastic (FM) screens. Users can choose a halftone screen according to their needs, such as proof output, photo printing and moiré suppression.



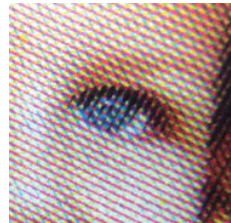
Rough screen  
Dot 130L



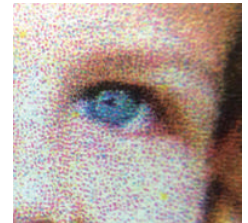
Standard screen  
Dot 190L



Fine screen  
Dot 270L



Line screen  
Line 180L



Stochastic screen  
FM-1

SUPERB REPRODUCTION QUALITY OF SMALL CHARACTERS AND FINE LINES

Line thinning and edge enhancement technologies

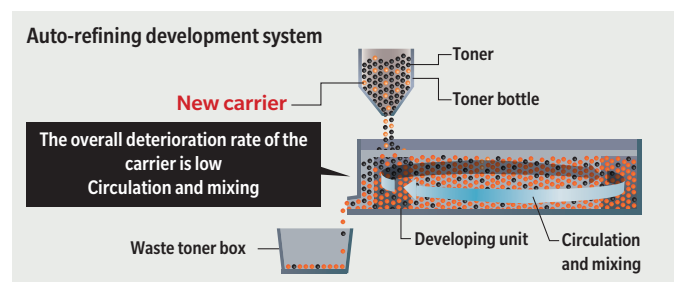
The device features precise contour processing that is able to effectively improve flaws such as blurred characters and streaks, and allows even coloured or contoured characters to be reproduced at a high-quality. Small characters on food or ingredient labels, or barcodes are made clearly visible.

<p>Offset printing 5pt fonts</p>	<p>Thinning Processing: Off Edge Enhancement: Off</p>	<p>AccurioLabel 230</p>	<p>Thinning Processing: Normal Edge Enhancement: Strong</p>
----------------------------------	---	-------------------------	---

STABILISED DEVELOPER

Auto-refining development system

A new carrier is supplied together with the toner to refresh the carrier in the developer, stabilising the developer and ensuring high-quality image output throughout the life cycle of the system. The developer's longer lifespan also minimises equipment downtime.



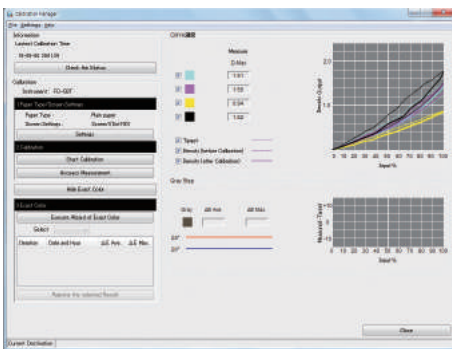
# OUTSTANDING OPERABILITY

The ease of maintaining the AccurioLabel 230 is superior not only to flexography printers, but also to liquid-development and inkjet printers. Time-consuming tasks, such as colour adjustments, can be completed with ease on the digital printing system. Operators can perform operations by simply following on-screen instructions with little time needed for training.

## COLOUR MANAGEMENT UTILITY

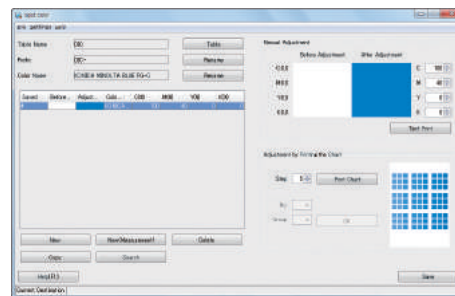
### Color Centro

Equipped with colour management software as standard, the AccurioLabel 230 supports colour correction, colour characteristic profile creation, and related editing and settings, making it an idea fit for the digital printing systems currently in use.



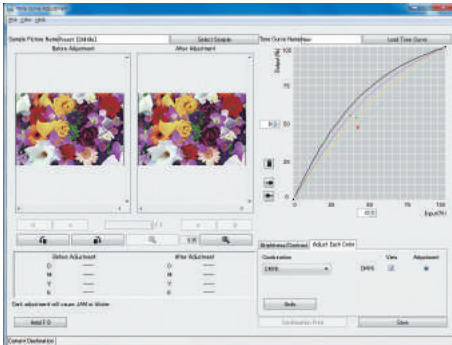
#### Calibration

Implement calibration settings and check accuracy via the workstation screen.



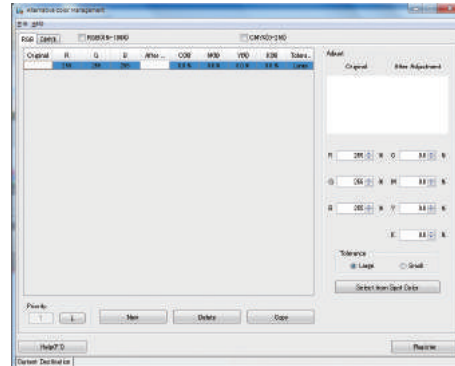
#### Spot colour editing

Set specific colours designated by the user. Select from a colour chart and register changes directly.



#### Tone curve adjustment

Easily adjust contrast and brightness as needed.



#### Colour replacement

Allows specific colours to be selected and replaced.

## SIMPLIFIED PRINTING OPERATION

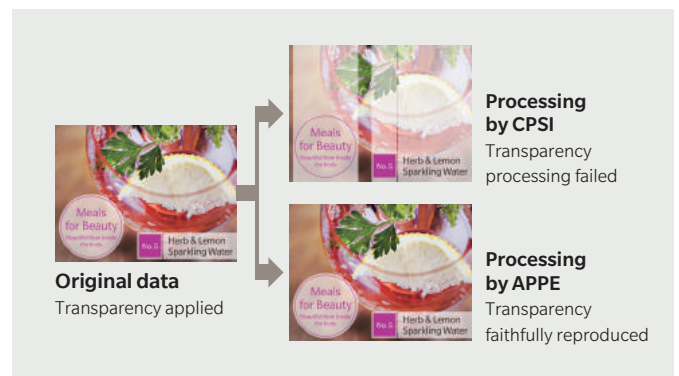
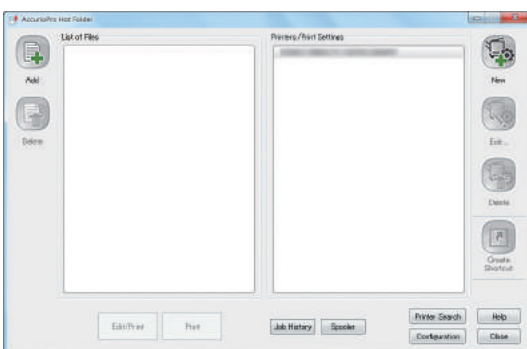
### AccurioPro Hot Folder

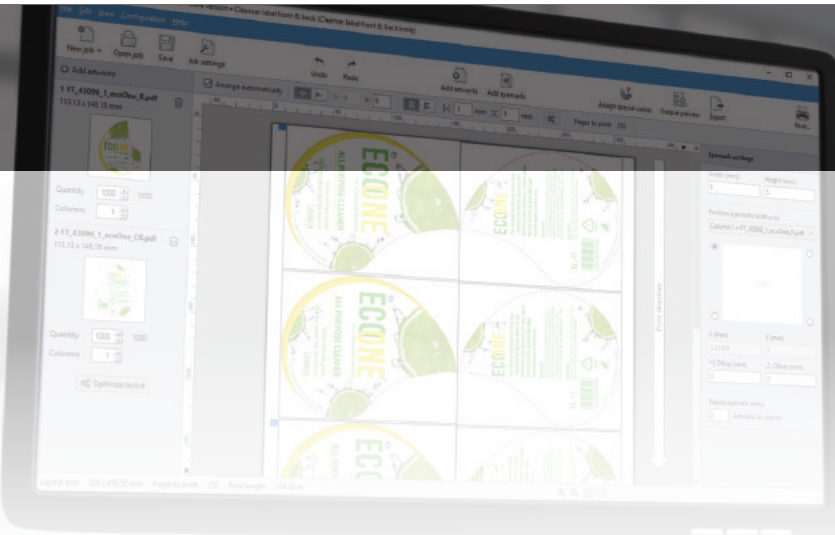
## LATEST ADOBE PDF PRINT ENGINE

### APPE 4.6

The AccurioPro Hot Folder allows you to directly print PDF or TIFF files without starting an application. You can also pre-set job settings streamline the process of making print settings.

Capable of directly printing PDF files without using a print driver, enabling faithful reproduction of transparency. Optional UK-218 (APPE kit) required.

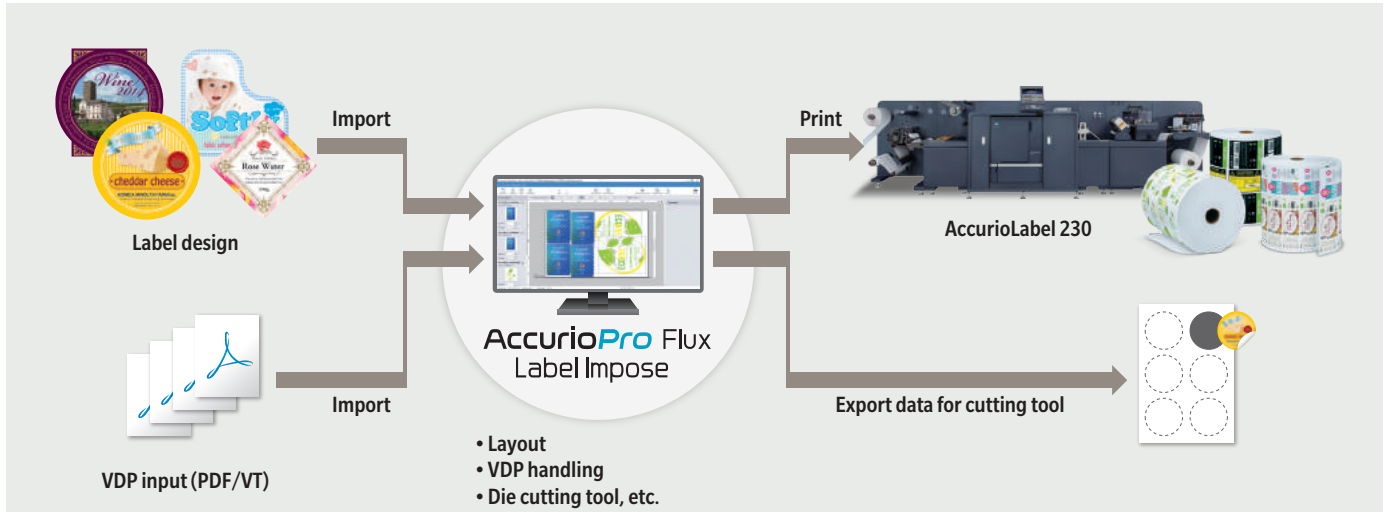
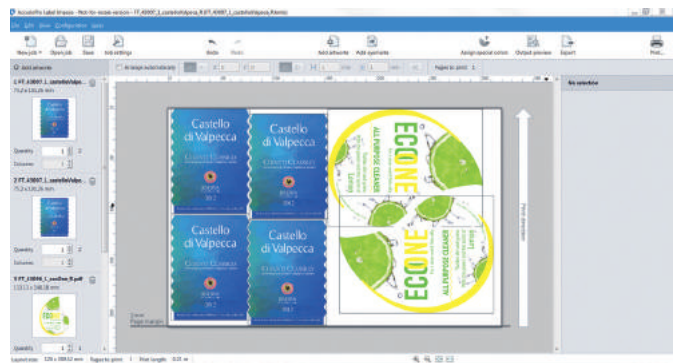




AN INDISPENSABLE TOOL FOR AUTOMATED LABEL PRINTING

## AccurioPro Flux Label Impose

The AccurioPro Flux Label Impose software tool provides the perfect solution for preparing label print jobs. Simple and intuitive, the software allows users to automatically impose and prepare label jobs for print while also enabling the creation of PDF data for the necessary cutting on die cutting equipment. AccurioPro Flux Label Impose works seamlessly with the AccurioLabel 230.



### KEY FEATURES

#### Automatic creation of label repetitions

Facilitates and automates the creation of label repetitions on the label web.

#### Variable Data Printing (VDP)

Easily incorporate VDP into the automatic creation of duplicate labels.

#### Adjustable spacing

Operators have the freedom to adjust the spacing between columns and rows individually and as required.

#### Add standard or customised eye marks

Complete flexibility when adding standard and customised eye marks in any desired position for offline finishing.

#### Arranging artwork

Users can choose between automatic and manual arrangement of artwork for the label layout.

#### Gang-up printing

A single sheet can be populated with just one or a variety of selected artwork motifs.

#### Die cutting tools

Additional boundaries (die lines, spot varnish, foil, etc.) can be detected and exported to PDF to be used as die cutting tools or to add additional embellishments to labels.

#### Recommended requirements

Operating system	Windows 7/8.1/10 Pro (64-bit)
Memory	2 GB RAM
Disk space	1 GB
CPU	Intel i5 dual core or equivalent
Screen resolution	1,280 x 720 pixels

## Major specifications for AccurioLabel 230 (Printer main body only)

Print method	Dry-toner electrophotography	
Colour support	Full Colour (CMYK)	
Print resolution/gradation	3600 dpi (equivalent) x 1200 dpi/8 bit	
Print image size	90 × 115 to 320 × 1,195 mm	
Paper width	165 to 330 mm	
Paper thickness range	81 to 256 gsm (80 to 250 µm)	
Print media	Non-adhesive paper (81 to 176 gsm) Adhesive paper (136 to 256 gsm) Adhesive coated paper G/M (136 to 256 gsm) Adhesive synthetic paper (136 to 176 gsm) Adhesive PP film (136 to 176 gsm) Adhesive PET film (136 to 216 gsm)	
Print speed	Speed range	Max.: 23.4 m/min (76 fpm) High: 18.9 m/min (62 fpm) Middle: 13.5 m/min (44 fpm) Low: 9.45 m/min (31 fpm)
	By media weight	81 to 176 gsm: max. 23.4 m/min 177 to 256 gsm: max. 18.9 m/min
Compatible file formats	PS, PDF (APPE supported), 8-bit TIFF	
VDP file formats	PPML, PDF-VT	
Power supply	Printer: 1-phase 220 V, 25 A, 50/60 Hz Digital platform: 3-phase 380 V, 20 A, 50/60 Hz	
Air supply	>8 bar (or equipped with an air compressor of the same specification)	

Specifications and features of delivered products are subject to change without notice.

## External Dimensions & Footprint

Outside dimensions (length × width × height)	4,700 × 2,862 × 1,540 mm (If the optional Flexo Station is included: 5,540 × 3,270 × 1,540 mm)
Footprint (length × width × height)	4,785 × 3,270 × 1,540 mm (If the optional Flexo Station is included: 5,625 × 3,270 × 1,540 mm)
Weight	Total weight: about 2,420 kg (If the optional Flexo Station is included: 2,980 kg)
	Unwinding unit: approx. 380 kg
	Front adjustment unit: approx. 330 kg (Optional Flexo Station: approx. 560 kg)
	Platform unit: approx. 350 kg
	Printer: approx. 297 kg
	Rear adjustment unit: approx. 510 kg
	Rewinding unit: approx. 550 kg

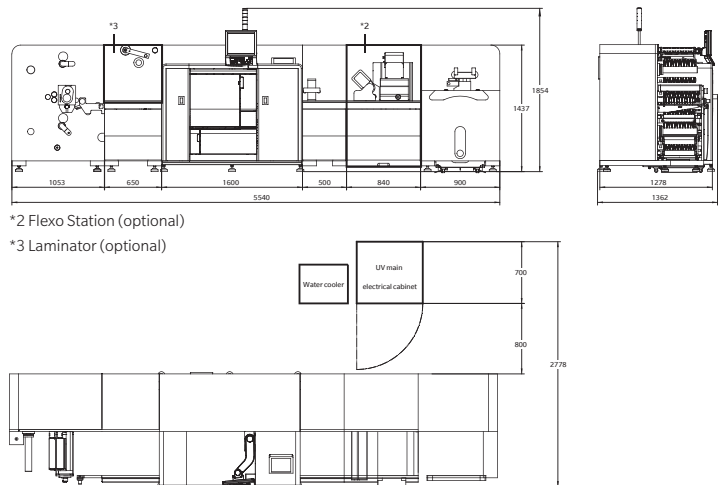
## Specifications of embedded controller

Type	Embedded (AIO) Equivalent to IC-605B equipped with UK-104
CPU	Intel Core i5 4570S 2.9 GHz (CPU in printer)
Memory	System memory 16 GB
HDD	1 TB × 3+500 GB × 1
Network	10/100/1000 Base-T
System	Linux
Power supply	Powered by host
Output speed	Max. 23.4 m/min
Resolution	1200×1200 dpi, 600×600 dpi
Paper size	Min. 90 × 115 to max. 320 × 1195 mm (printer specification)
PDL Language	PostScript 3 (CPSI 3020), PDF version 1.7, TIFF version 6 Compliant, PPML version 2.2, PCL5c equivalent, PCL XL (PCL6 version 3) equivalent, APPE version 4.6 <sup>1</sup> , PDF/VT version 2 <sup>1</sup>
Protocol	TCP/IP, NetBEUI, IPP, WSD, SMB, Bonjour
Compatible OS	Windows 7, 8.1, 10 Windows Server 2008/R2, 2012/R2, 2016, 2019 (including 64-bit versions) Mac OS X 10.9, X 10.10, X 10.11, X 10.12, X 10.13, 0.14
Main fonts	Adobe 136 fonts, PCL 80 fonts
Driver	PS Plugin driver
Compatible Konica Minolta applications	PS Web Connection, PS Net Care Device Manager, Color Centro, AccurioPro Hot Folder

\*1 UK-218 option required

The paper types and paper weights mentioned in this document are printed under specific conditions, and some untested papers may not be suitable for printing production.

Product appearance, configuration and/or specifications are subject to change without notice.



\*2 Flexo Station (optional)

\*3 Laminator (optional)

## KONICA MINOLTA BUSINESS SOLUTIONS (M) SDN BHD

Company No: 198101006526 (72640-P)

Infinite Centre, Lot 1, Jalan 13/6,  
46200 Petaling Jaya, Selangor, Malaysia

### CONTACT US:

#### Sales & Marketing

Tel: +603-7801 2611 Fax: +603-7954 8316

Email: marketing.1@konicaminolta.com



KONICA MINOLTA

facebook.com/konicaminoltamy

linkedin.com/company/konicaminoltamy

[www.konicaminolta.com.my/home](http://www.konicaminolta.com.my/home)